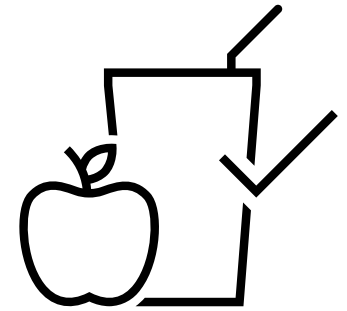
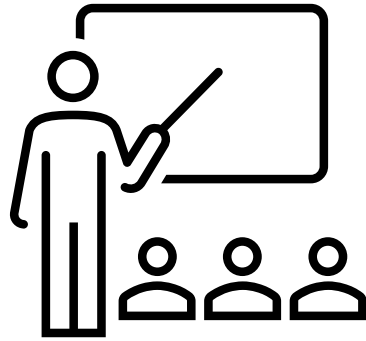


GRMS STUDENT SAFETY 2020



Masks need to fully cover the mouth and nose at all times when worn.



Safety Rules:

1. Masks must be worn:
 - Classroom
 - Hallway
 - Lunch (when not eating)
2. Handwashing
3. Social distancing when possible

Classroom:

1. Masks worn when not socially distancing
2. Please use only your own materials
3. Hand sanitizer available

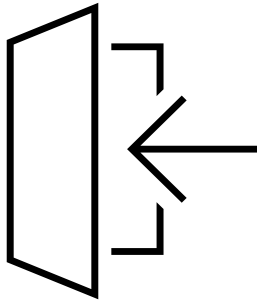
Transitions:

1. Masks worn at all times in the hallway
2. Staggered release from classes (6 - 7 - 8)
3. Proceed directly to class

Lunch:

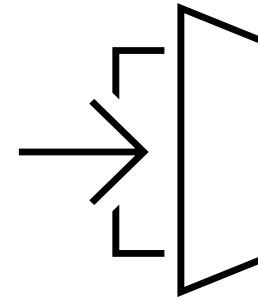
1. Masks worn except when eating
2. Assigned Seating
3. Must stay seated in the cafeteria

GRMS STUDENT SAFETY 2020



Arrival:

1. Mask must be worn in all common areas of the building
2. Student Temperatures will be taken before entering their class
3. 6th grade students will be dismissed to class at 7:20 and are tardy at 7:30



Dismissal:

1. Masks worn until students get off their bus or into their vehicle
2. Staggered release
 - Week 1: Parent Pick up - 6 - 7 - 8
 - Week 2 on: Parent Pick up - 8 - 7 - 6
3. Parents, please do not check students out after 1:30 when possible